



InFUSE Accelerator Workshop

**Supporting Government for Blue
Carbon Management in Indonesia**

Indonesia Climate Change Trust Fund (ICCTF)
Jakarta, 3 September 2024



Mangrove

3,36 mil ha

Largest in the world
(Ministry of Environment and Forestry)



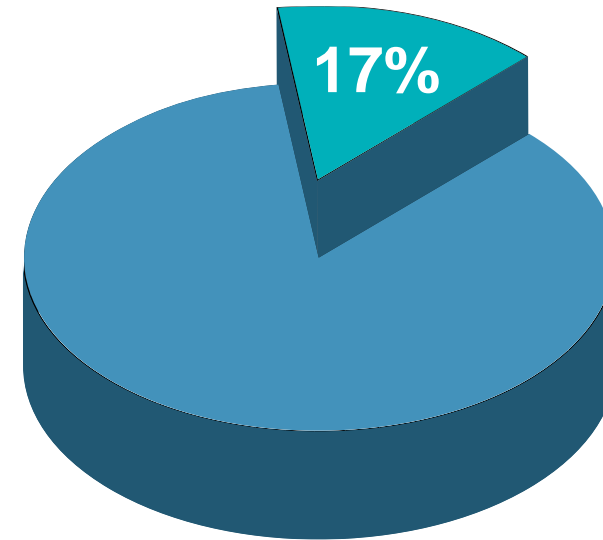
Seagrass

1.8 mil Ha

(Ministry of Marine Affairs
and Fisheries)

293.465 ha

Validated by BRIN



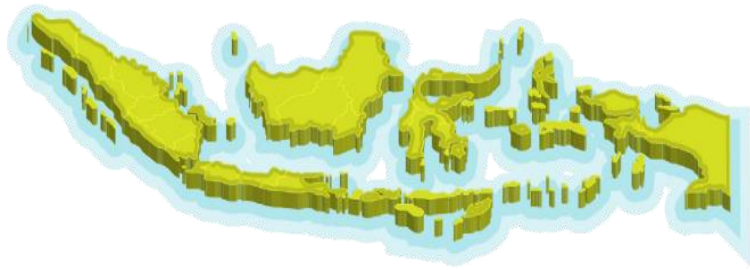
**Indonesia contributes to
approximately 17% of
Global Blue Carbon Stocks**

(Alongi et al, 2015)

Blue Carbon Policy Towards the Upcoming National Long Term Development Plan (RPJPN) 2025-2045

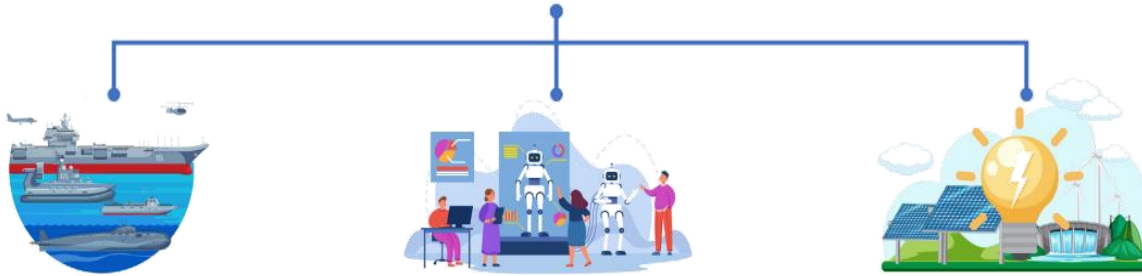


Kementerian PPN/
Bappenas



NUSANTARA STATE

Archipelagic country with political, economics, national security, and ocean culture/civilization toughness as world maritime axis



Sovereign

Resilient, United,
Independent, Safe

Advanced

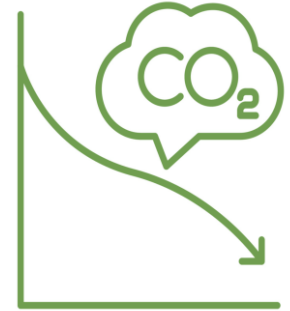
Empowered,
Modern, Tough,
Innovative, Lawful

Sustainable

Balanced development
between the economic,
social and environment

The 5th Objectives of Indonesian Vision 2025-2045:

The intensity of greenhouse gasses emission reduced to 93.5%, towards net zero emission



17 Direction of Development as a Transformation Foundation

IE15. Quality Environment

- Biodiversity Conservation

IE16. Energy, Water, and Food Resiliency

- Mangrove management as an effort for water resource conservation

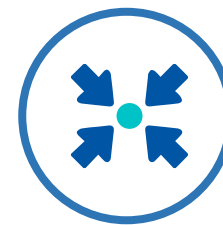
IE17. Disaster and Climate Change Resiliency

- Improve Reforestation, Reduce Deforestation
- Wetland and Peatland Restoration
- Fiscal Incentive and Carbon Tax

Key Factors for climate change mitigation and contribution to the NDC achievement from Blue Carbon



Crucial to identify the required policy for Blue Carbon and the supporting instruments (Roadmap, MRV, Baseline, etc)



Integrating blue carbon ecosystem management into the biodiversity and climate policies in Indonesia



Partnership is a fundamental tool to overcome blue carbon ecosystem management challenge

Partnerships are instrumental in addressing the complex and interconnected challenges associated with blue carbon ecosystem management



Policy Influence

Advocating for policies that support the conservation and sustainable management of blue carbon ecosystems.



Resource Sharing

Allow for the pooling of resources, enable feasibility for research, conservation measures, and monitoring.



Multi-Stakeholder Collaboration

Involve various stakeholders, including local communities, governments, non-governmental organizations (NGOs), scientists, and businesses.



Community Involvement

Help to ensure that communities' needs and perspectives are considered to promote sustainable practices.



Monitoring and Research

Facilitate data sharing, standardization of monitoring protocols, and the development of a comprehensive understanding.

Coordination and Policy



BAPPENAS

Kementerian Perencanaan Pembangunan Nasional/
Badan Perencanaan Pembangunan Nasional

Bappenas

Mainstreaming Blue
Carbon into National
Plan (Medium and
Long Term)



Kemenkomarves

Blue Carbon Project
Coordination among relevant
policymakers



Kemenkeu-BPDLH-OJK

Blue Carbon Ecosystem
Accounting, Policy for Blue
Carbon Trading and Market



Kemendagri

Mainstreaming Blue Carbon
Policy to Sub National Levels

Technical Implementation



KLHK

UNFCCC focal point, NDC
National Registry for climate
change mitigation effort,
mangrove data custodian



KKP

Implement climate
change mitigation in Blue
Sector, MPA manager,
seagrass data custodian.



BRIN
BADAN RISET
DAN INOVASI NASIONAL

BRIN

Implement Blue
carbon Research



BRGM

Implement Mangrove
Restoration Program

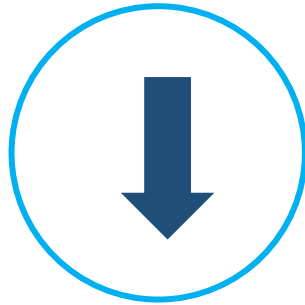
Challenges in Blue Carbon Ecosystem Management



Kementerian PPN/
Bappenas



Policy gap in delivering blue carbon as part of the Nationally Determined Contribution (NDC)



Degradation of the Blue Carbon Ecosystem



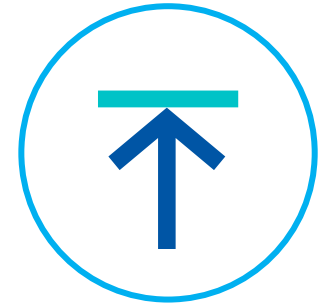
Synergy and coordination between ministries and institutions in the implementation of blue carbon are not yet optimal



Data and information on blue carbon ecosystem have not been updated



Standard methods for collecting data that can be used nationally to build a blue carbon baseline have not been implemented



Limited funding for Blue Carbon Ecosystem conservation and restoration programs

Partial Dynamics of Blue Carbon Ecosystem Management in Indonesia



Kementerian PPN/
Bappenas



Various of mapping and synergy fundamental to optimize the benefit of blue carbon ecosystem.

Blue Carbon in Indonesia

Policy

- IBCSF
- NBCAP
- Mangrove Road Map – MOEF
- Seagrass Road Map - MMAF

Research

- Blue Carbon Deck by CIFOR
- Global Ocean Account Partnership
- National Research and Innovation Agency
- Universities
- Private Research Company

Finance

- Result Based Payment
- National Carbon Exchange
- Innovative financing instruments

Restoration and Conservation Project

- M4CR
- ICCTF-AFD
- Other projects, by private, CSRs, NGOs, and community initiative

IBCSF as the foundation to formulate National Blue Carbon Roadmap for Indonesia



Strategy 1

Institutional Framework

- Regulatory framework for IBCSF
- National Secretariat
- Blue Carbon custodian and Blue Carbon Science Partnership



Strategy 2

Policy & Guidance

- Blue Carbon Strategy and Action Plan
- National Protocol for Blue Carbon
- Baseline data for NDC
- Presidential Decree & RPJMN-RPJPN
- Blue Carbon in NDC



Strategy 3

Financial Support

- Financing (including Blue Carbon Incentive Scheme)

Measurement, Reporting, and Verification (MRV) for Blue Carbon in Indonesia



Kementerian PPN/
Bappenas



Mangrove

- Mangrove included in FOLU sector on NDC Indonesia currently, using MRV protocol on IPCC *Guideline for Coastal Wetlands 2006*
- MRV for mangrove included into guideline for Forest ecosystem,
- Coastal Mangrove measured only based on coverage
- Measured by Ministry of Environment and Forestry (MoEF)



- MRV for Seagrass still developed by Ministry of Marine Affairs and Fisheries

Seagrass

IBCSF enable the efforts in formulating MRV guideline of Blue Carbon in Indonesia



Essential for publish particular MRV document of Blue Carbon MRV as a single policy, compiling mangrove and seagrasses, to be referred as a document to be used in order to optimize the carbon value from blue carbon ecosystem

PROJECT: Support for the Integration of Blue Carbon Ecosystems in Indonesia's Biodiversity and Climate Policies



Kementerian PPN/
Bappenas



Outcomes



Funding
AFD 2050 facility



Budget
620.000 EUR



Duration
3 Years,
October 2022-
Januari 2026

Locations

1 Integration of blue carbon into national and sub-national policies through the implementation of the Indonesian Blue Carbon Policy Framework (IBCSF)

- Blue Carbon Roadmap
- Assessment of existing regulations and initiatives regarding access to blue carbon credit
- Recommendation for NDC Update

2 Improve the capacity of national and sub-national stakeholders in terms of baseline, inventory, and MRV

- Blue Carbon Baseline
- MRV Guideline





Roadmap for **Blue Carbon** is currently unavailable



Lack of updated Data and information of **Blue Carbon** ecosystem, as well as the lack of national standardized method for **blue carbon** data collection, which usable for **blue carbon** baseline and monitoring



Blue Carbon on the *Nationally Determined Contribution (NDC)* of Indonesia are considered as less prioritized

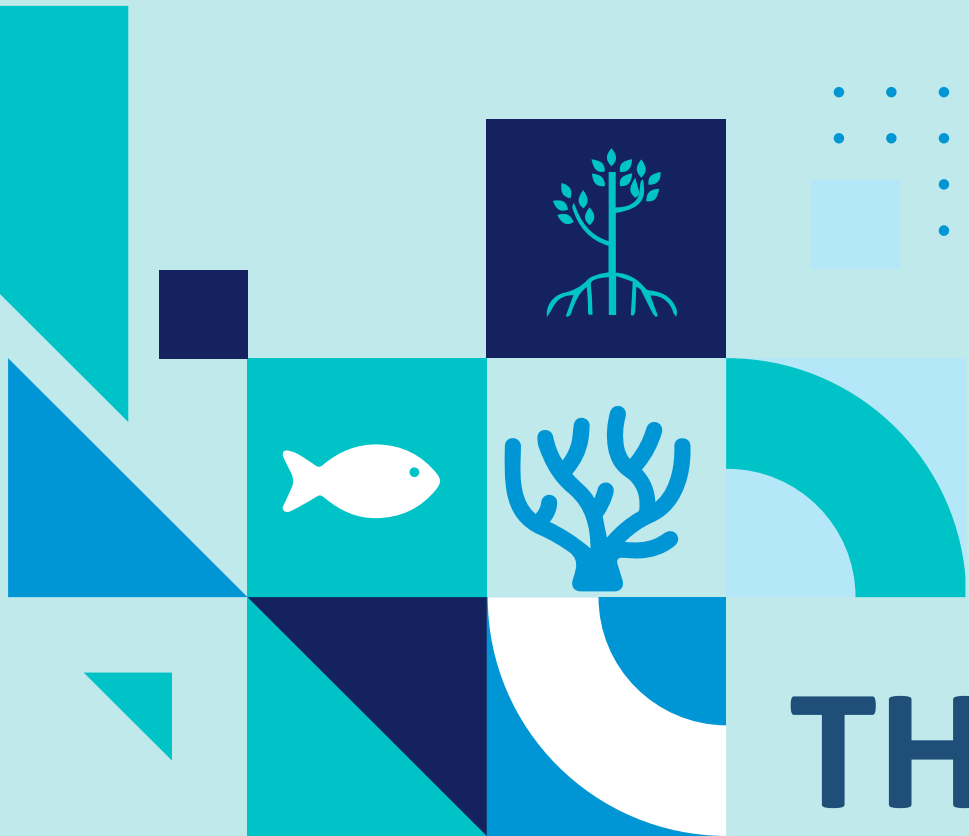


The needs to establish particular policy guideline to mainstream the **blue carbon** into provincial/district level

Way Forward



- Mainstreaming Blue Carbon into national and sub-national level through the implementation of IBCSF
- Development of roadmap, national baseline and MRV (Monitoring, Reporting, and Verification) of Blue Carbon in Indonesia
- Improve the national and sub-national stakeholder's capacity on blue carbon issue



THANK YOU